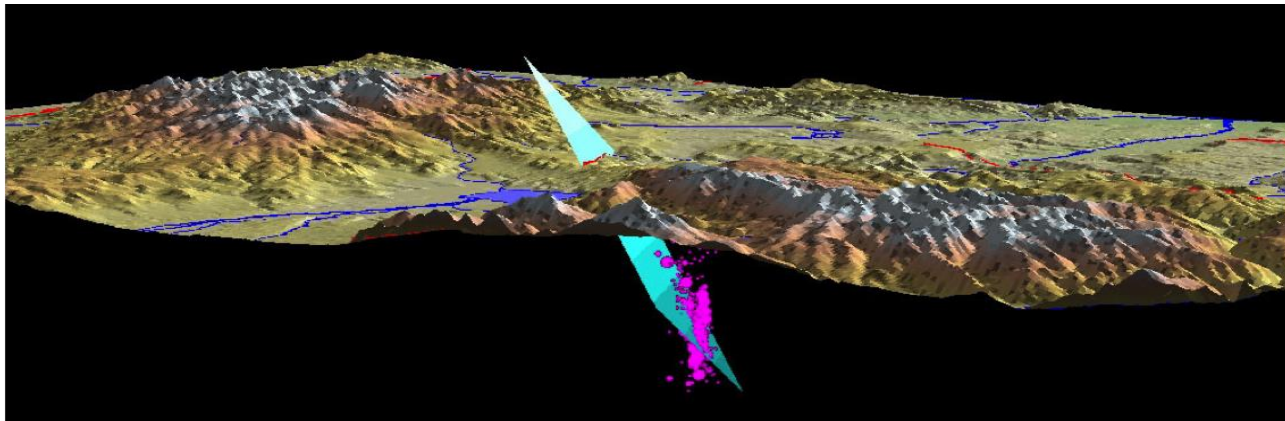




Prof. PATRICK J. KENNELLY, Long Island University, New York.

**COURSE TITLE:
GEOSPATIAL TECHNOLOGY FOR ENVIRONMENTAL ANALYSIS AND
MAPPING**

3 crediti - Il corso è aperto a tutti gli studenti



Lectures schedule:

Tuesday 24/4/18 from 14:30 to 17:30 @ Classroom A5

Lecture tile: Introduction to cartography

-

Friday 27/4/18 from 9:30 am to 12:30 @ Classroom A5

Lecture tile: Cartographic visualization

-

Thursday 3/5/18 from 9:30 am to 12:30 @ Classroom A5

Lecture tile: Representing terrain on maps

-

Tuesday 8/5/18 from 14:30 to 17:30 @ Atelier Informatico

Lecture tile: Introduction to geospatial analysis

-

Friday 11/5/18 from 9:30 to 12:30 @ Atelier Informatico

Lecture tile: Introduction to satellite image interpretation

-

Tuesday 15/5/18 from 14:30 to 17:30 @ Classroom A4

Lecture tile: Using GIS to analyze resiliency

-

Friday 18/5/18 from 9:30 am to 12:30 @ Classroom A5

Lecture tile: Geospatial analysis for physical geography