



UNIVERSITÀ
POLITECNICA
DELLE MARCHE



***PIANO DI EMERGENZA
ED EVACUAZIONE***

COMPLESSO SCIENZE
(Edifici: Scienze 1, Scienze 2, Scienze 3)

PLANIMETRIE

REVISIONE n. 5

Settembre 2022

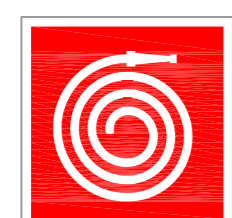
TAVOLE N°

1 - 11

SERVIZIO SALUTE E SICUREZZA

Ing. FILOMENA SAVINI
Dott.ssa RITA FRABONI
Dott. ALESSANDRO VITO MENGA
Dott.ssa SARA STAFFOLANI

LEGENDA



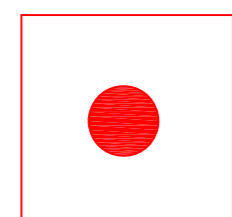
Idrante a muro



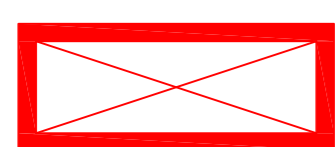
Estintore



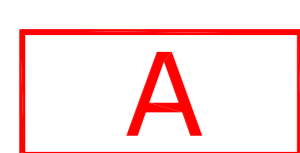
Attacco pompa VV.F.



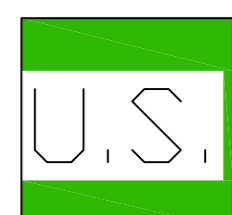
Pulsante di allarme



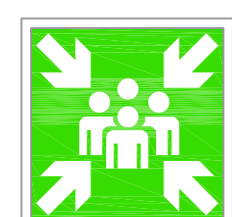
Armadio antincendio



Centralina di allarme antincendio



Uscita di sicurezza



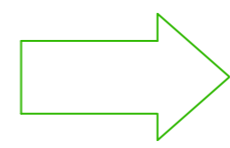
Punto di raccolta

TF

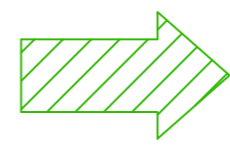
Porta tagliafuoco

AP

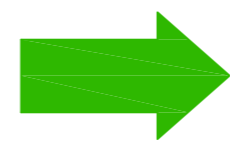
Porta antipanico



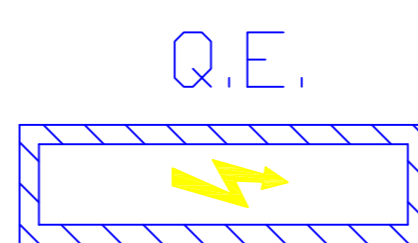
Percorso di uscita verso l'alto



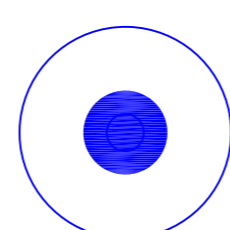
Percorso di uscita orizzontale



Percorso di uscita verso il basso



Quadro elettrico di piano



Interruttore elettrico generale



Valvola intercettazione gas-metano

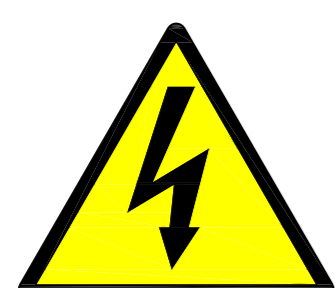


Linea gas interrata



Parcheggio

LEGENDA RISCHI



Tensione elettrica pericolosa



Radiazioni ionizzanti



Sostanze chimiche



Radiazioni non ionizzanti



Materia infiammabile



Bassa temperatura



Rischio biologico

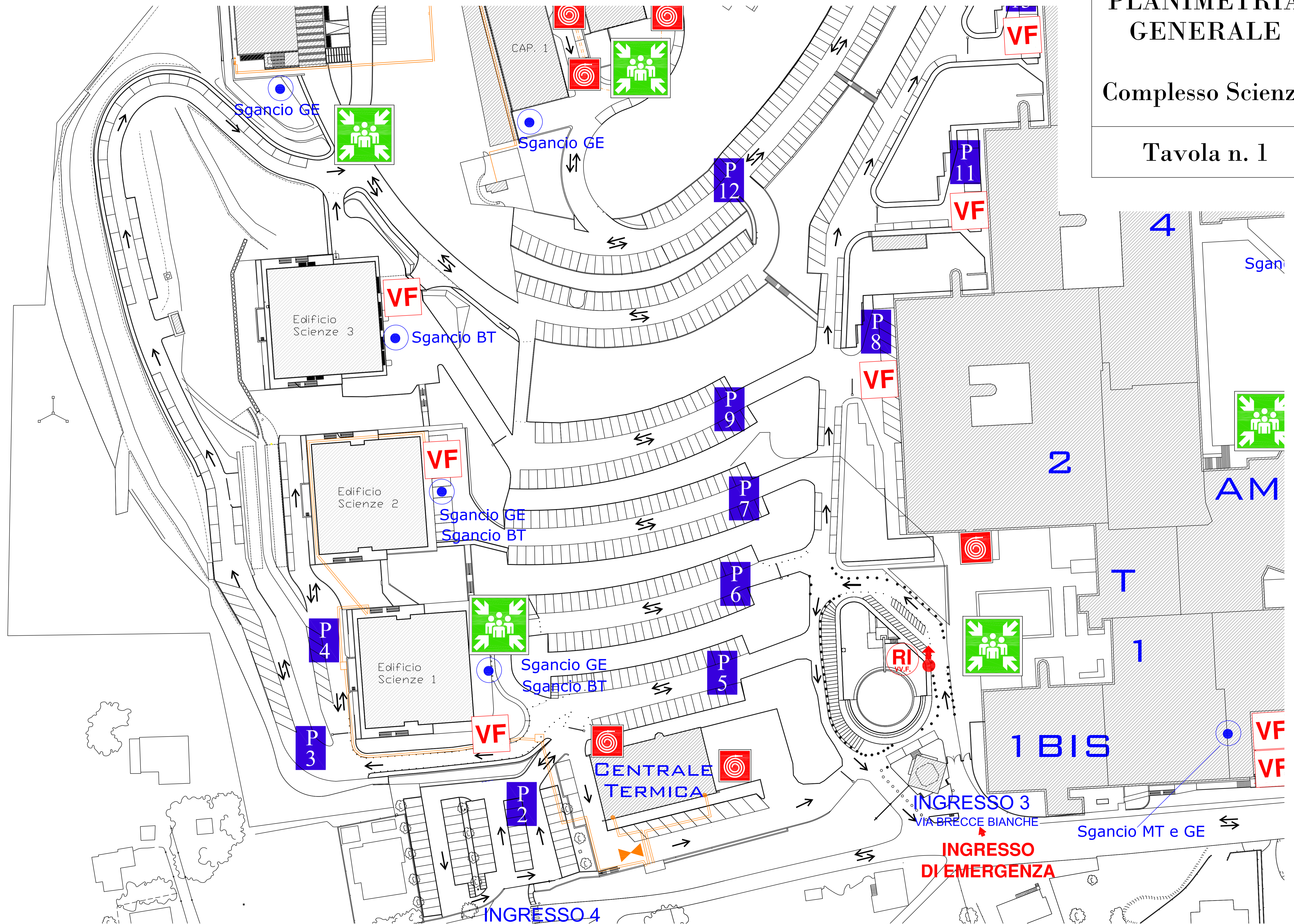


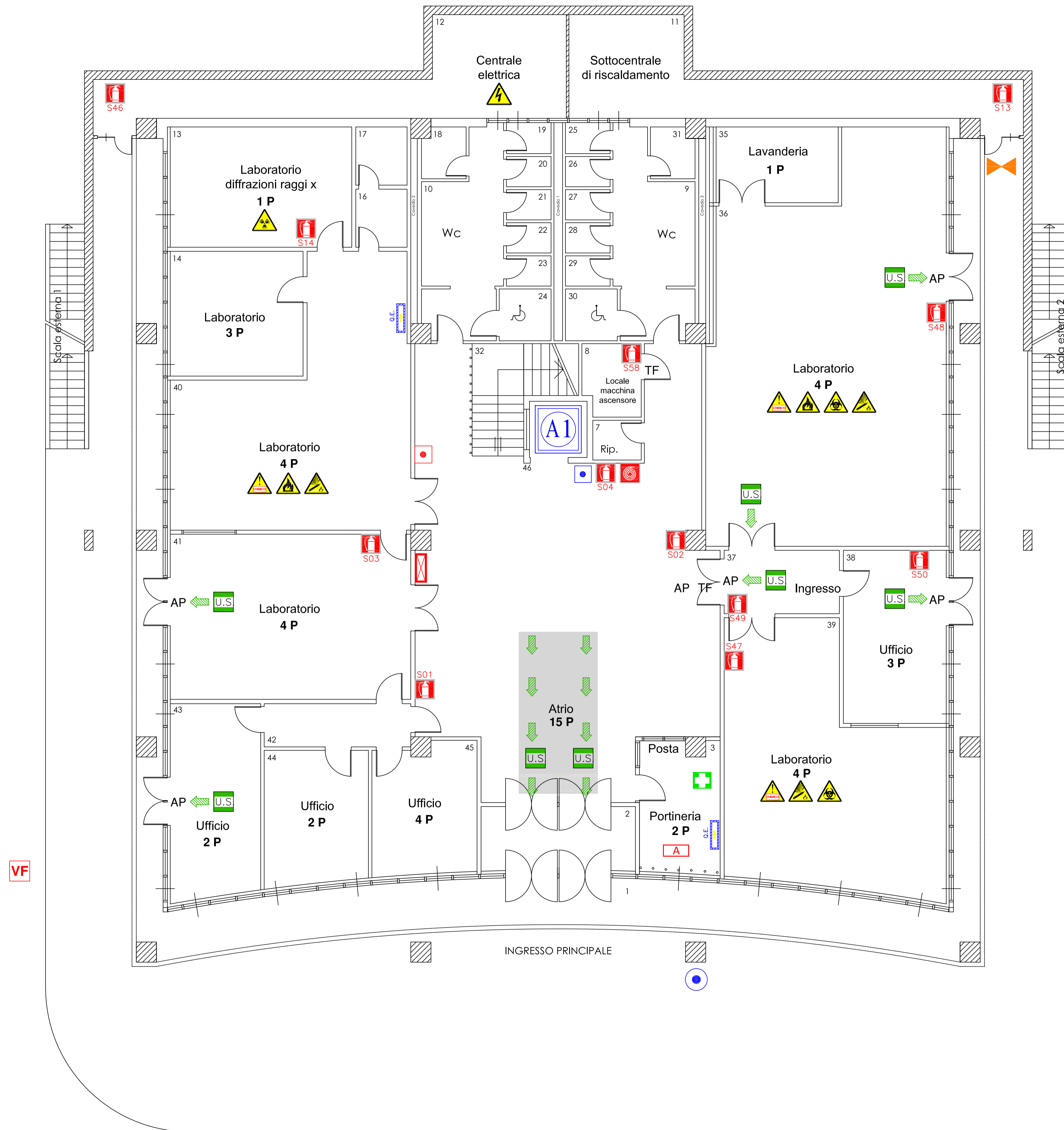
Bombola pressurizzata

PLANIMETRIA GENERALE

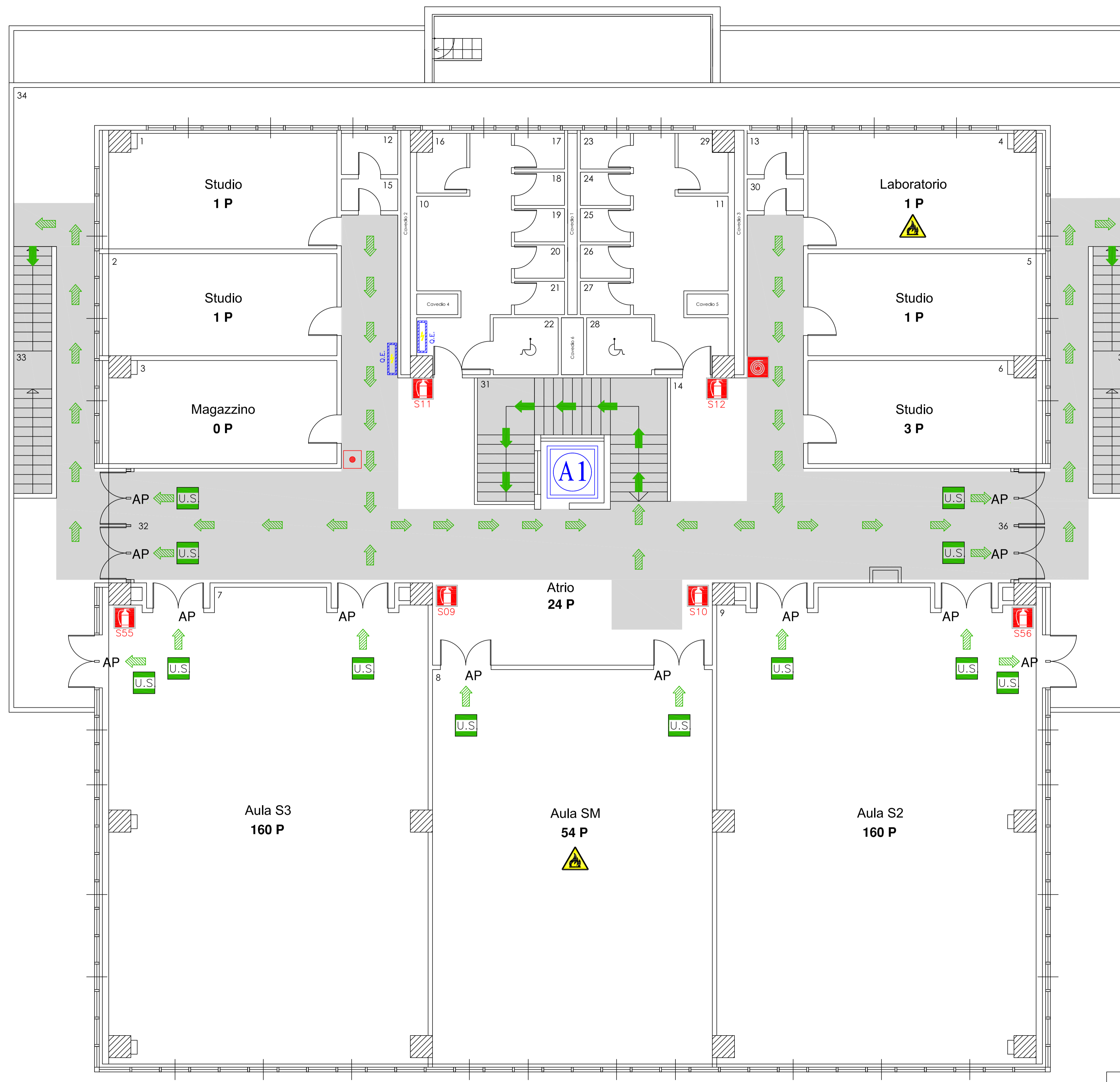
Complesso Scienze

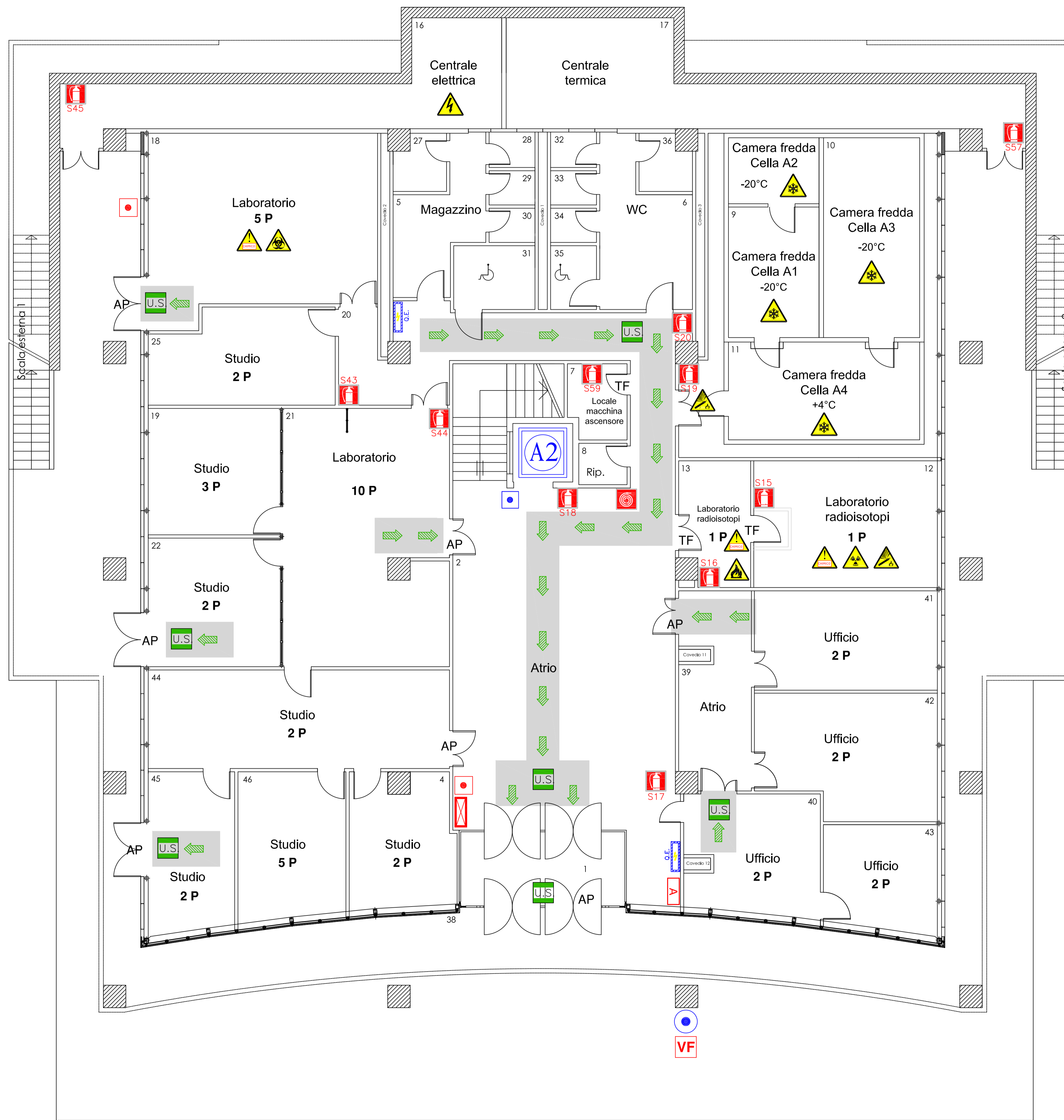
Tavola n. 1

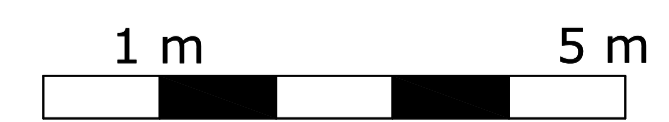




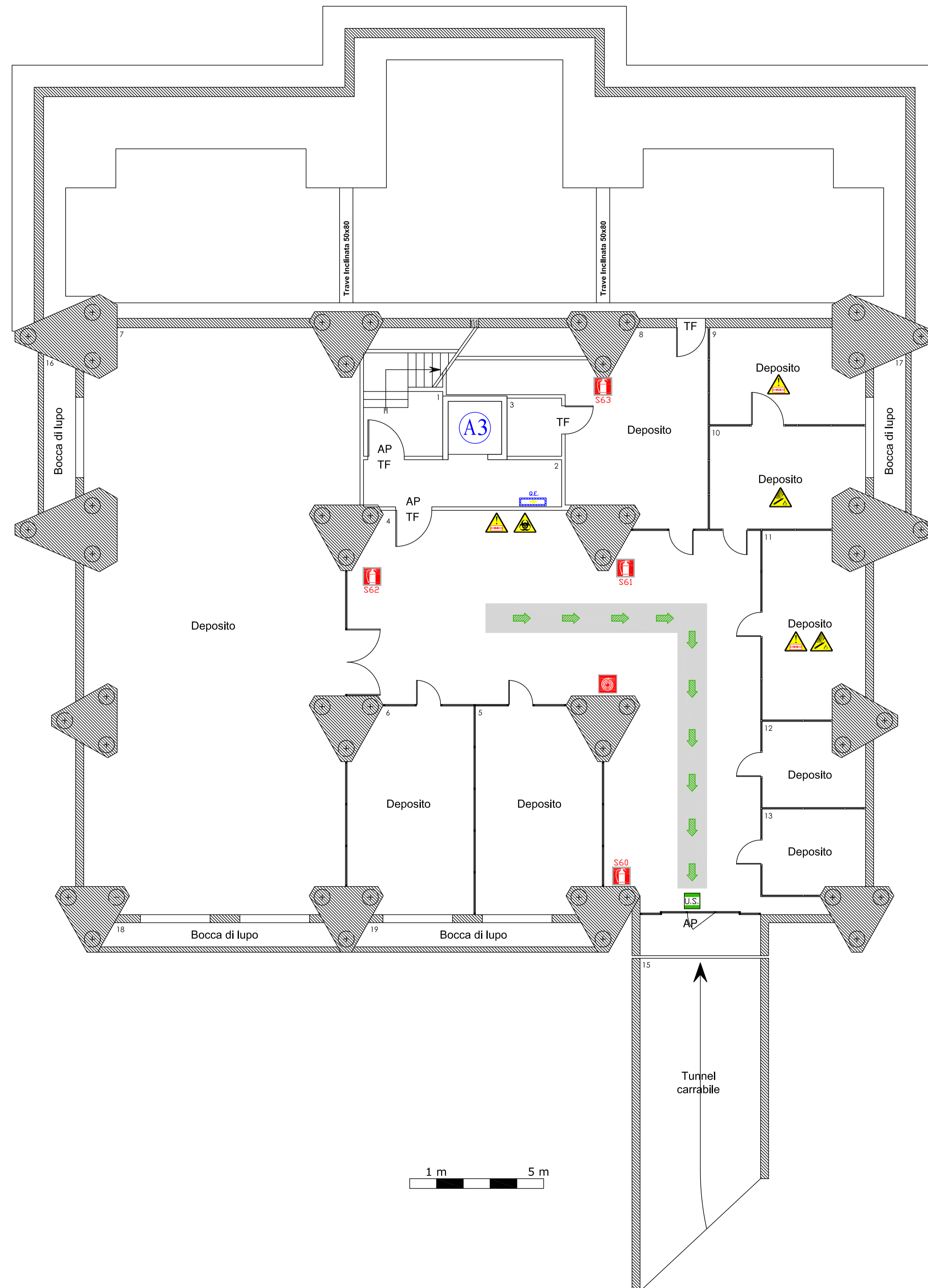












**DEPOSITO BOMBOLE
GAS SPECIALI**

